

**CADILLAC VENTURES INC.**

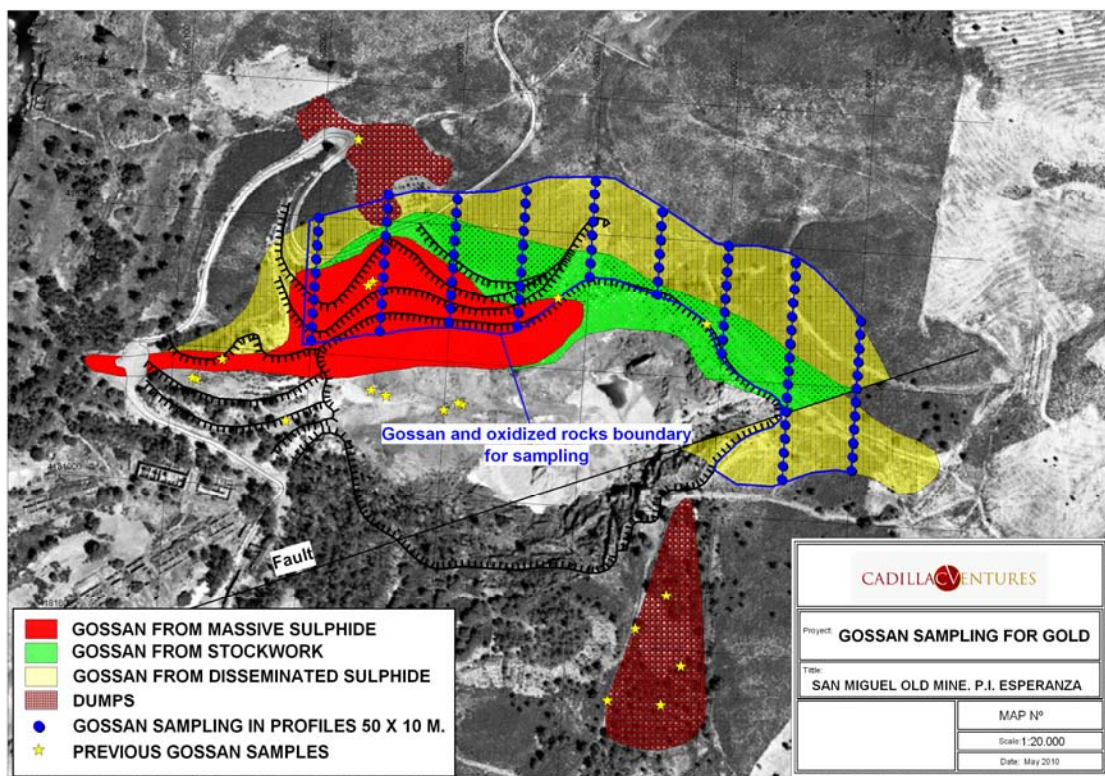
**Cadillac commences systematic sampling for gold on San Miguel Gossan, Esperanza Investigation Permit area.**

Toronto, May 12, 2010 – Cadillac Ventures Inc. (TSXV-CDC) (“Cadillac” or the “Company”) is pleased to announce that the Company is commencing a systematic grid sampling program on the San Miguel gossan located on the Esperanza investigation permit in the Iberian Pyrite Belt, Southern Spain.

**San Miguel Gossan, P.I. Esperanza**

On May 3<sup>rd</sup> 2010 the Company press released the assay results obtained to date from the surface sampling program in the area of the historical San Miguel Mine, which included a result of 6.87 gpt Au from a 1.09 kg. sample obtained from the exposed contact zone. While further results are pending from previous sampling the Company determined that a surface mapping program to determine the extent of the gossan on surface was warranted.

This surface gossan zone has been mapped over an area which is approximately 500m in an east-west direction by approximately 100m in a north-south direction, the mapping has identified 3 lithologies present in the gossan zone as illustrated in the image below, with the sampling grid overlain.



Surface mapping has resulted in the following;

- 1) Gossan from disseminated sulphide – this has been mapped as an area of approximately 500m in an east/west direction and approximately 50m in a north/south direction
- 2) Gossan from stockwork – this has been mapped as an area of approximately 411m e/w and approximately 83m n/s
- 3) Gossan from massive sulphide – this has been mapped as an area of approximately 215m e/w and approximately 100m n/s.
- 4) Two areas of dumps from historic operations, both of which have been sampled previously.

Gold bearing samples have been previously obtained and press released from the massive sulphide and the stockwork gossan zones; there has been no sampling by the Company as yet of the disseminated sulphides gossan zone. Samples will be taken as indicated by the grid illustrated above along n/s lines which are spaced 50m apart. Every 10m on the n-s lines a small pit will be dug to a depth of 20cm into the outcrop and a sample obtained. These samples will be sent for processing via ALS Chemex. It is anticipated that this program will result in 95 samples being sent for processing.

Mr. Brian H. Newton P. Geo, and a “qualified person” pursuant to NI 43-101 has reviewed and approved the technical information in this press release on behalf of the Company.

### **About Cadillac**

Cadillac is a development-focused exploration Company which has the past-producing Thierry Property near Pickle Lake in Northern Ontario, several exploration projects in Spain in joint venture with MATSA and three Canadian exploration projects, located in regions that have been historically active.

In addition to the Thierry mine project Cadillac wholly owns the New Alger project, a previously productive gold mine, located outside of Cadillac, Quebec, where the Company has entered into a joint venture agreement with Renforth Resources Inc. for a three year \$2.5 million exploration program. In Spain, the Company is joint venture partner with Minas de Aguas Tenidas, S.A.U. regarding the exploration of 12 different investigation licenses surrounding the Aguas Tenidas Mine in the Iberian Pyrite Belt of southern Spain. The Burnt Hill Project is a 51% owned tungsten tin project located outside of Fredericton, New Brunswick. The Company also holds the Pickle Gold project comprised of 21 claims in the vicinity of 3 historically proactive gold mines near Pickle Lake, and the Kirkland Gold project, located about 15 kilometres west of the town of Kirkland Lake.

For more information regarding Cadillac, please visit our website at [www.cadillacventures.com](http://www.cadillacventures.com), or call Norman Brewster, President and Chief Executive Officer, at 416 203-7722.

*Neither TSX Venture Exchange nor its Regulation Services Provider (as that term is defined in the policies of the TSX Venture Exchange) accepts responsibility for the adequacy or accuracy of this release.*