

CADILLAC VENTURES INC.

Cadillac obtains a 5.8% Copper and 24.8% Zinc sample from Esperanza Project dumps on the Esperanza P.I.

Toronto, May 17, 2010 – Cadillac Ventures Inc. (TSXV-CDC) (“Cadillac” or the “Company”) is pleased to report the following additional assays from a regional orientation sampling program ongoing over the 12 license areas which form Cadillac’s Joint Venture with MATSA in the Iberian Pyrite Belt of Southern Spain.

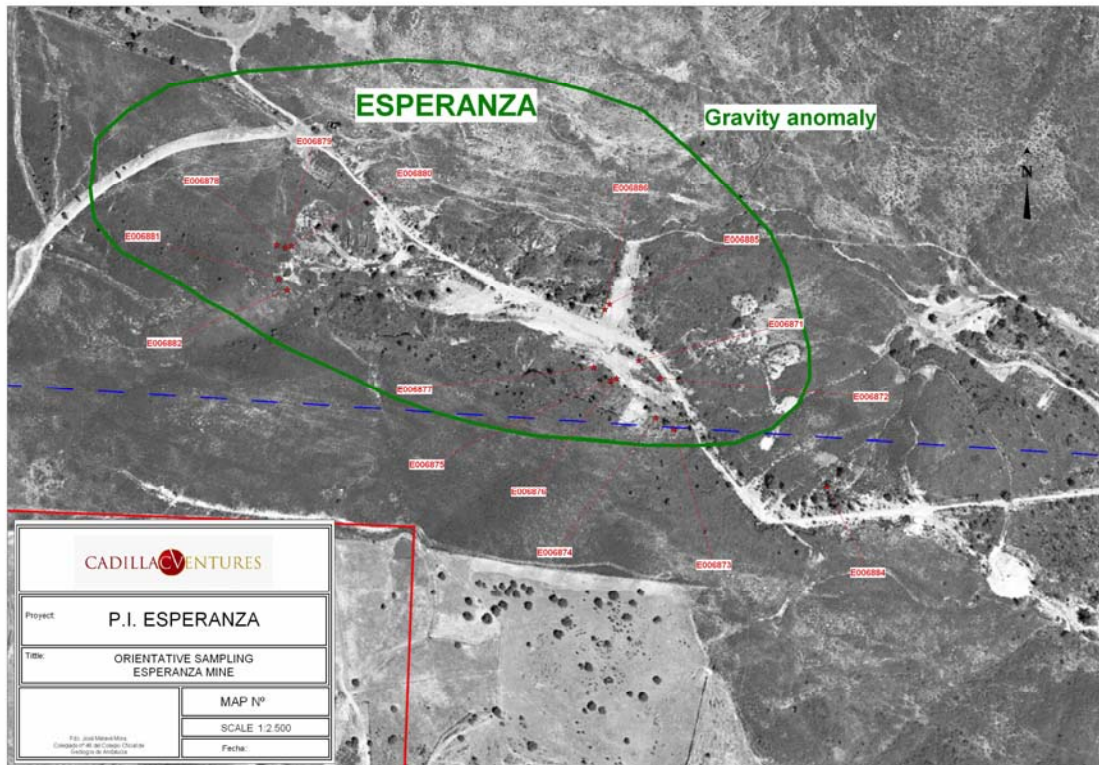
Esperanza Project, Esperanza P.I.

The Esperanza Project is located on the Esperanza investigation permit and encompasses a historic copper mine which was active from 1906-1931, operated by Esperanza Copper and Sulphur Ltd. The former Esperanza Mine was an underground operation that, in conjunction with the historic Angostura Mine located 3km to the west (and within the Esperanza P.I.), produced a total between the two deposits of 1.84 MT at 1.55% Cu between 1906 and 1931 as reported in Spanish language technical publications on the Pyrite Belt.

Sample Results

DESCRIPTION	ANALYTICAL RESULTS						
	SAMPLE	Cu %	Zn %	Pb %	S %	Au gpt	Ag gpt
Float gossan. Esperanza	E006871	0.010	0.005	1.820	1.64	0.53	9.6
Float gossan. Esperanza	E006872	0.010	0.006	0.465	0.55	0.24	12.3
In situ gossan. Esperanza	E006873	0.004	0.001	0.066	0.12	0.94	7
Float gossan but near to in situ gossan. Esperanza	E006874	0.013	0.016	0.174	0.38	0.7	74.3
Complex sulphide (Zn rich) from dump. Esperanza	E006875	0.260	>30	8.700	9.26	0.366	51.1
Polymetallic sulphide (Zn-Cu rich) from dump. Esperanza	E006876	5.810	24.800	2.060	>10.0	1.03	98.5
Float gossan. Esperanza	E006877	0.017	0.037	6.330	2.94	0.09	4
Float gossan. Esperanza	E006878	0.153	0.025	0.220	0.33	4.3	>100
Float gossan. Esperanza	E006879	0.066	0.005	0.682	0.56	3.45	>100
Float gossan. Esperanza	E006880	0.075	0.026	0.192	0.22	6.17	76.4
In situ gossan. Esperanza	E006881	0.191	0.010	0.766	1.22	0.17	10.6
Float gossan. Esperanza	E006882	0.099	0.013	0.129	0.19	14.1	>100
Float gossan. Esperanza	E006883	0.020	0.005	0.016	0.2	<0.05	0.7
Complex sulphide (Zn rich) from dump (Entibado shaft). Esperanza	E006884	0.069	29.300	16.350	>10.0	2.03	75.2
Massive sulphide (Cu rich) from the dump. Esperanza	E006885	3.930	0.240	0.191	>10.0	0.056	10.9
Coarse grain pyrite (Azufrón). Esperanza	E006886	0.996	0.071	0.043	>10.0	0.427	38.8

Sample Locations



These samples were obtained onsite either by or under the direct supervision of Mr. Jose Malave Mora, Euro Geol. The sample program is being executed under the supervision of Mr. Brian H. Newton, P.Geo and President of Minroc Management Limited. Both of Mr. Malave and Mr. Newton are “qualified persons” as defined by National Instrument 43-101. The samples were personally delivered to the ALS Chemex preparation facility in Seville under seal by Mr. Malave where they were processed by ALS Chemex which includes the crushing of each sample and a representative sample of that material being prepared. These were sent by air express courier by ALS to their accredited laboratory facility in Vancouver, Canada where the samples underwent the Au-AA23 (Au 30g FA-AA finish) for gold and ME –OG 62 Ore Grade Elements –Four acid for other metals process.

Mr. Brian H. Newton P.Geo, and a “qualified person” pursuant to NI 43-101 has reviewed and approved the technical information in this press release on behalf of the Company.

About Cadillac

Cadillac is a development-focused exploration Company which has the past-producing Thierry Property near Pickle Lake in Northern Ontario, several exploration projects in Spain in joint venture with MATSA and three Canadian exploration projects, located in regions that have been historically active.

In addition to the Thierry mine project Cadillac wholly owns the New Alger project, a previously productive gold mine, located outside of Cadillac, Quebec, where the Company has entered into a joint venture agreement with Renforth Resources Inc. for a three year \$2.5 million exploration

program. In Spain, the Company is joint venture partner with Minas de Aguas Tenidas, S.A.U. regarding the exploration of 12 different investigation licenses surrounding the Aguas Tenidas Mine in the Iberian Pyrite Belt of southern Spain. The Burnt Hill Project is a 51% owned tungsten tin project located outside of Fredericton, New Brunswick. The Company also holds the Pickle Gold project comprised of 21 claims in the vicinity of 3 historically proactive gold mines near Pickle Lake, and the Kirkland Gold project, located about 15 kilometres west of the town of Kirkland Lake.

For more information regarding Cadillac, please visit our website at www.cadillacventures.com, or call Norman Brewster, President and Chief Executive Officer, at 416 203-7722.

Neither TSX Venture Exchange nor its Regulation Services Provider (as that term is defined in the policies of the TSX Venture Exchange) accepts responsibility for the adequacy or accuracy of this release.