

## CADILLAC VENTURES INC.

### Cadillac obtains receives further assay results from Angostura including 4.03% copper outcrop

Toronto, May 25, 2010 – Cadillac Ventures Inc. (TSXV-CDC) (“Cadillac” or the “Company”) is pleased to report the following additional assays from a regional orientation sampling program ongoing over the 12 license areas which form Cadillac’s Joint Venture with MATSA in the Iberian Pyrite Belt of Southern Spain.

#### Angostura Project, Esperanza P.I.

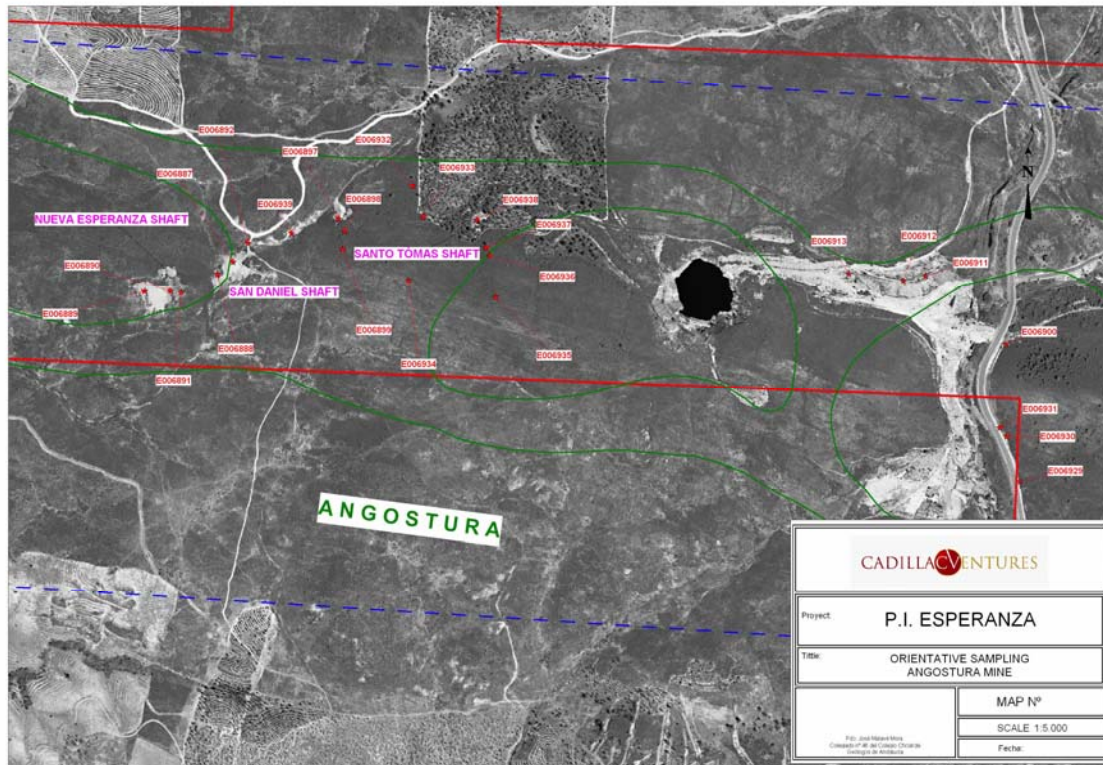
The Angostura Project is located on the Esperanza investigation permit and encompasses a historic copper mine which was active from 1906-1931, operated by Esperanza Copper and Sulphur Ltd. The former Angostura Mine was an open pit and underground operation that, in conjunction with the historic Esperanza Mine located 3km to the east (and within the Esperanza P.I.), produced a total between the two deposits of 1.84 MT at 1.55% Cu between 1906 and 1931 as reported in Spanish language technical publications on the Pyrite Belt.

#### Sample Results

DESCRIPTION	ANALYTICAL RESULTS					
	SAMPLE	Cu %	Zn %	Pb %	Au gpt	Ag gpt
<b>Massive sulphide (Cu rich) float from the dump</b>	<b>E006897</b>	<b>8.22</b>	<b>0.067</b>	<b>0.022</b>	<b>0.368</b>	<b>2</b>
Float gossan	E006898	0.119	0.001	0.010	0.149	<0.2
Gossan outcrop	E006899	0.014	0.000	0.006	0.02	<0.2
Gossan outcrop	E006900	0.104	0.009	0.005	0.063	0.7
Float gossan	E006929	0.016	0.169	0.000	0.01	<0.2
Gossan outcrop	E006930	0.220	0.016	0.000	0.066	<0.2
Gossan outcrop	E006931	0.242	0.053	0.000	0.04	<0.2
<b>Outcrop oxidized rocks with gossan bands</b>	<b>E006932</b>	<b>0.167</b>	<b>0.009</b>	<b>0.173</b>	<b>1.34</b>	<b>24.2</b>
Outcrop gossaneous rocks with malachite	E006933	0.323	0.000	0.008	0.141	<0.2
Outcrop oxidized tuffs and tuffites from mineral horizon	E006934	0.018	0.001	0.001	0.021	<0.2
Outcrop oxidized tuffs and tuffites from mineral horizon	E006935	0.032	0.001	0.000	0.034	<0.2
Outcrop oxidized tuffs and tuffites from mineral horizon	E006936	0.033	0.001	0.001	0.033	<0.2
Outcrop gossaneous rocks and gossan	E006937	0.020	0.000	0.001	0.061	<0.2
<b>Semimassive sulphide float from Santo Tomás dump</b>	<b>E006938</b>	<b>0.463</b>	<b>3.310</b>	<b>0.114</b>	<b>1.485</b>	<b>21.9</b>
<b>Quartz outcrop with iron oxidized and malachite</b>	<b>E006939</b>	<b>4.03</b>	<b>0.055</b>	<b>0.002</b>	<b>0.007</b>	<b>0.4</b>

Note: Samples taken above are grab samples and selective in nature which are unlikely to represent average grades on the property.

## Sample Locations



These samples were obtained onsite either by or under the direct supervision of Mr. Jose Malave Mora, Euro Geol. The sample program is being executed under the supervision of Mr. Brian H. Newton, P.Geol and President of Minroc Management Limited. Both of Mr. Malave and Mr. Newton are “qualified persons” as defined by National Instrument 43-101. The samples were personally delivered to the ALS Chemex preparation facility in Seville under seal by Mr. Malave where they were processed by ALS Chemex which includes the crushing of each sample and a representative sample of that material being prepared. These were sent by air express courier by ALS to their accredited laboratory facility in Vancouver, Canada where the samples underwent the Au-AA23 (Au 30g FA-AA finish) for gold and ME –OG 62 Ore Grade Elements –Four acid for other metals process.

Mr. Brian H. Newton P.Geol, and a “qualified person” pursuant to NI 43-101 has reviewed and approved the technical information in this press release on behalf of the Company.

### **About Cadillac**

Cadillac is a development-focused exploration Company which has the past-producing Thierry Property near Pickle Lake in Northern Ontario, several exploration projects in Spain in joint venture with MATSA and three Canadian exploration projects, located in regions that have been historically active.

In addition to the Thierry mine project Cadillac wholly owns the New Alger project, a previously productive gold mine, located outside of Cadillac, Quebec, where the

Company has entered into a joint venture agreement with Renforth Resources Inc. for a three year \$2.5 million exploration program. In Spain, the Company is joint venture partner with Minas de Aguas Tenidas, S.A.U. regarding the exploration of 12 different investigation licenses surrounding the Aguas Tenidas Mine in the Iberian Pyrite Belt of southern Spain. The Burnt Hill Project is a 51% owned tungsten tin project located outside of Fredericton, New Brunswick. The Company also holds the Pickle Gold project comprised of 21 claims in the vicinity of 3 historically productive gold mines near Pickle Lake, and the Kirkland Gold project, located about 15 kilometres west of the town of Kirkland Lake.

For more information regarding Cadillac, please visit our website at [www.cadillacventures.com](http://www.cadillacventures.com), or call Norman Brewster, President and Chief Executive Officer, at 416 203-7722.

*Neither TSX Venture Exchange nor its Regulation Services Provider (as that term is defined in the policies of the TSX Venture Exchange) accepts responsibility for the adequacy or accuracy of this release.*